

SPX · 1h · SPCFD * O6,568.16 H6,584.36 L6,565.35 C6,582.68 +14.40 (+0.22%)



SPX · 1h · SPCFD * O6,568.16 H6,584.36 L6,565.35 C6,582.68 +14.40 (+0.22%)



17

©

SPX · 1h · SPCFD * O6,568.16 H6,584.36 L6,565.35 C6,582.68 +14.40 (+0.22%)

3



17

Mar 2 3 4 7 8 9 10 11 14 15 16 17 18 21 22 23 24 25 28 29 30 31 Apr

SPX · 1h · SPCFD * O6,568.16 H6,584.36 L6,565.35 C6,582.68 +14.40 (+0.22%)



SPX · 1h · SPCFD * O6,568.16 H6,584.36 L6,565.35 C6,582.68 +14.40 (+0.22%)



SPX · 1h · SPCFD * O6,568.16 H6,584.36 L6,565.35 C6,582.68 +14.40 (+0.22%)



17

SPX · 1h · SPCFD * O6,568.16 H6,584.36 L6,565.35 C6,582.68 +14.40 (+0.22%)

3



SPX · 1h · SPCFD * O6,568.16 H6,584.36 L6,565.35 C6,582.68 +14.40 (+0.22%)



17

SPX · 1h · SPCFD * O6,568.16 H6,584.36 L6,565.35 C6,582.68 +14.40 (+0.22%)



SPX · 1h · SPCFD * O6,568.16 H6,584.36 L6,565.35 C6,582.68 +14.40 (+0.22%)



17

30 Oct 4 5 6 7 10 11 12 13 14 17 18 19 20 21 24 25 26 27 28 31 Nov 2

SPX · 1h · SPCFD * O6,568.16 H6,584.36 L6,565.35 C6,582.68 +14.40 (+0.22%)

3



17

31 Nov 2 3 4 7 8 9 10 11 14 15 16 17 18 21 22 23 25 29 30 Dec 2

SPX · 1h · SPCFD * O6,568.16 H6,584.36 L6,565.35 C6,582.68 +14.40 (+0.22%)



17

SPX · 1h · SPCFD * O6,568.16 H6,584.36 L6,565.35 C6,582.68 +14.40 (+0.22%)



SPX · 1h · SPCFD * O6,568.16 H6,584.36 L6,565.35 C6,582.68 +14.40 (+0.22%)



SPX · 1h · SPCFD * O6,568.16 H6,584.36 L6,565.35 C6,582.68 +14.40 (+0.22%)

3



17

Mar 2 3 6 7 8 9 10 13 14 15 16 17 20 21 22 23 24 27 28 29 30 31 Apr

SPX · 1h · SPCFD * O6,568.16 H6,584.36 L6,565.35 C6,582.68 +14.40 (+0.22%)

▼ 3



17

Apr 4 5 6 10 11 12 13 14 17 18 19 20 21 24 25 26 27 28 May

20.00
0.00
-20.00

SPX · 1h · SPCFD * O 6,568.16 H 6,584.36 L 6,565.35 C 6,582.68 +14.40 (+0.22%)

3



SPX · 1h · SPCFD * O6,568.16 H6,584.36 L6,565.35 C6,582.68 +14.40 (+0.22%)



SPX · 1h · SPCFD * O6,568.16 H6,584.36 L6,565.35 C6,582.68 +14.40 (+0.22%)

▼ 3



SPX · 1h · SPCFD * O6,568.16 H6,584.36 L6,565.35 C6,582.68 +14.40 (+0.22%)



17

Aug 2 3 4 7 8 9 10 11 14 15 16 17 18 21 22 23 24 25 28 29 30 31 Sep

SPX · 1h · SPCFD * O6,568.16 H6,584.36 L6,565.35 C6,582.68 +14.40 (+0.22%)



SPX · 1h · SPCFD * O6,568.16 H6,584.36 L6,565.35 C6,582.68 +14.40 (+0.22%)



17

Oct 3 4 5 6 9 10 11 12 13 16 17 18 19 20 23 24 25 26 27 30 31 Nov

SPX · 1h · SPCFD * O6,568.16 H6,584.36 L6,565.35 C6,582.68 +14.40 (+0.22%)

3



SPX · 1h · SPCFD * O6,568.16 H6,584.36 L6,565.35 C6,582.68 +14.40 (+0.22%)

3



17

Dec 4 5 6 7 8 11 12 13 14 15 18 19 20 21 22 26 27 28 29 2024

SPX · 1h · SPCFD * O6,568.16 H6,584.36 L6,565.35 C6,582.68 +14.40 (+0.22%)



SPX · 1h · SPCFD * O6,568.16 H6,584.36 L6,565.35 C6,582.68 +14.40 (+0.22%)



SPX · 1h · SPCFD * O6,568.16 H6,584.36 L6,565.35 C6,582.68 +14.40 (+0.22%)

3



SPX · 1h · SPCFD * O6,568.16 H6,584.36 L6,565.35 C6,582.68 +14.40 (+0.22%)



SPX · 1h · SPCFD * O6,568.16 H6,584.36 L6,565.35 C6,582.68 +14.40 (+0.22%)

3



17

May

2

3

6

7

8

9

10

13

14

15

16

17

20

21

22

23

24

28

29

30

31

Jun

5,340.00

5,320.00

5,300.00

5,280.00

5,260.00

5,253.75

5,240.00

5,220.00

5,180.00

5,160.00

5,140.00

5,120.00

5,100.00

5,080.00

5,060.00

5,040.00

5,020.00

5,000.00

4,981.00

20.00

0.00

-20.00

3

SPX · 1h · SPCFD * O6,568.16 H6,584.36 L6,565.35 C6,582.68 +14.40 (+0.22%)



SPX · 1h · SPCFD * O 6,568.16 H 6,584.36 L 6,565.35 C 6,582.68 +14.40 (+0.22%)



17

Jul 2 3 8 9 10 11 12 15 16 17 18 19 22 23 24 25 26 29 30 31 Aug

SPX · 1h · SPCFD * O6,568.16 H6,584.36 L6,565.35 C6,582.68 +14.40 (+0.22%)



17

SPX · 1h · SPCFD * O6,568.16 H6,584.36 L6,565.35 C6,582.68 +14.40 (+0.22%)



SPX · 1h · SPCFD * O6,568.16 H6,584.36 L6,565.35 C6,582.68 +14.40 (+0.22%)

▼ 3



▼



17

Oct 2 3 4 7 8 9 10 11 14 15 16 17 18 21 22 23 24 25 28 29 30 31 Nov



SPX · 1h · SPCFD * O6,568.16 H6,584.36 L6,565.35 C6,582.68 +14.40 (+0.22%)



SPX · 1h · SPCFD * O6,568.16 H6,584.36 L6,565.35 C6,582.68 +14.40 (+0.22%)



TV

Dec 3 4 5 6 9 10 11 12 13 16 17 18 19 20 23 24 27 30 31 2025

SPX · 1h · SPCFD * O 6,568.16 H 6,584.36 L 6,565.35 C 6,582.68 +14.40 (+0.22%)



2025 3 6 7 8 10 13 14 15 16 17 21 22 23 24 27 28 29 30 31 Feb

SPX · 1h · SPCFD * O6,568.16 H6,584.36 L6,565.35 C6,582.68 +14.40 (+0.22%)



SPX · 1h · SPCFD * O6,568.16 H6,584.36 L6,565.35 C6,582.68 +14.40 (+0.22%)



17

Mar 4 5 6 7 10 11 12 13 14 17 18 19 20 21 24 25 26 27 28 31 Apr

SPX · 1h · SPCFD * O6,568.16 H6,584.36 L6,565.35 C6,582.68 +14.40 (+0.22%)



SPX · 1h · SPCFD * O6,568.16 H6,584.36 L6,565.35 C6,582.68 +14.40 (+0.22%)



SPX · 1h · SPCFD * O6,568.16 H6,584.36 L6,565.35 C6,582.68 +14.40 (+0.22%)

3



SPX · 1h · SPCFD * O6,568.16 H6,584.36 L6,565.35 C6,582.68 +14.40 (+0.22%)



SPX · 1h · SPCFD * O6,568.16 H6,584.36 L6,565.35 C6,582.68 +14.40 (+0.22%)

3



SPX · 1h · SPCFD * O6,568.16 H6,584.36 L6,565.35 C6,582.68 +14.40 (+0.22%)

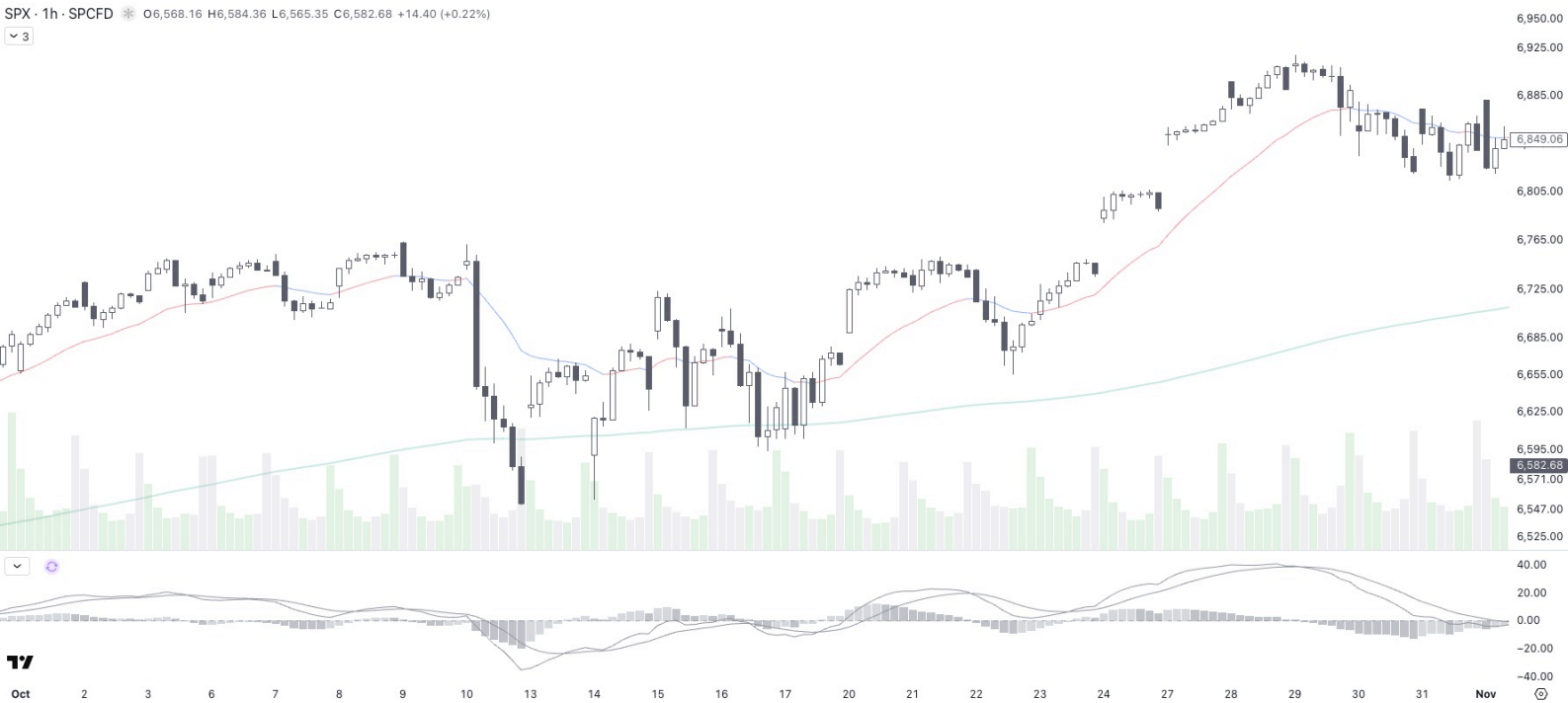


17

Sep 3 4 5 8 9 10 11 12 15 16 17 18 19 22 23 24 25 26 29 30 Oct

SPX · 1h · SPCFD * O6,568.16 H6,584.36 L6,565.35 C6,582.68 +14.40 (+0.22%)

▼ 3



17

Oct 2 3 6 7 8 9 10 13 14 15 16 17 20 21 22 23 24 27 28 29 30 31 Nov

SPX · 1h · SPCFD * O6,568.16 H6,584.36 L6,565.35 C6,582.68 +14.40 (+0.22%)



17

SPX · 1h · SPCFD * O6,568.16 H6,584.36 L6,565.35 C6,582.68 +14.40 (+0.22%)

3



17

⊞

SPX · 1h · SPCFD * O6,568.16 H6,584.36 L6,565.35 C6,592.68 +14.40 (+0.22%)



17

SPX · 1h · SPCFD * O6,568.16 H6,584.36 L6,565.35 C6,592.68 +14.40 (+0.22%)



SPX · 1h · SPCFD * O6,568.16 H6,584.36 L6,565.35 C6,582.68 +14.40 (+0.22%)



TV

Mar 3 4 5 6 9 10 11 12 13 16 17 18 19 20 23 24 25 26 27 30 31 Apr